



ROÇADORA BRF

EQUIPO DE SERIE

- Sistema Hidráulico com Bombas de Alumínio GR.2 40 + 13 lt (HP19) - Distribuidor com cabos e controle remoto	- Rotação reversível do rotor - Dispositivo flutuante na cabeça - Categoria de engate de 3 pontos 1	- Dispositivo anti-choque no engate de 3 pontos - Gimbal
------------------------------------------------------------------------------------------------------------------	-----------------------------------------------------------------------------------------------------------	-------------------------------------------------------------






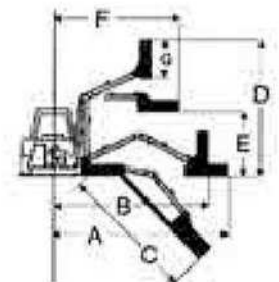
CÓDIGO	MODELO		 cm	 L	 Hp	 kg	€	
6BRF16	BRF 160	28	50 *	30	15 - 25	600	230	7.485,00
6BRF25	BRF 250	28	60	48	20 - 30	700	260	7.485,00
6BRF30	BRF 300	40	80	55	20 - 30	800	300	7.890,00
6BRF35	BRF 350	40	80	55	25 - 35	900	350	8.380,00



FIG. 1

BRF 160 BRF 250 BRF 300 BRF 350

A	170	250	300	350
B	190	240	290	340
C	110	200	250	300
D	230	280	300	350
E	110	160	180	200
F	135	170	190	210
G	50*	60	80	80



CÓDIGO	ACCESORIOS	€
34803	Tensores para acoplamento ao trator	215,00
34811	Trocador de calor	850,00
"+E"	Controles eletro-hidráulicos para o trator com joystick proporcional (fig.1)	2.575,00
0700100209	Gimbal	Incluído

* Transmisión por correa



DESBROZADOR BRF

EQUIPO DE SERIE		
- Sistema hidráulico con bombas de aluminio GR.2 40+13 lt (HP19)	- Rotación del rotor reversible	- Dispositivo antichoque en el enganche de 3 puntos
- Distribuidor con cables y mando a distancia	- Dispositivo flotante en la cabezal	- Cardán
	- Enganche de 3 puntos categoría 1	

CÓDIGO	MODELO	cm		oil	Hp	kg	kg	€
		cm	cm	L				
6BRF16	BRF 160	28	50 *	30	15 - 25	600	230	7.485,00
6BRF25	BRF 250	28	60	48	20 - 30	700	260	7.485,00
6BRF30	BRF 300	40	80	55	20 - 30	800	300	7.890,00
6BRF35	BRF 350	40	80	55	25 - 35	900	350	8.380,00



FIG. 1

	BRF 160	BRF 250	BRF 300	BRF 350
A	170	250	300	350
B	190	240	290	340
C	110	200	250	300
D	230	280	300	350
E	110	160	180	200
F	135	170	190	210
G	50*	60	80	80



CÓDIGO	ACCESORIOS	€
34803	Tensores de enganche al tractor	215,00
34811	Intercambiador de calor	850,00
"+E"	Mandos electrohidráulicos para el tractor con joystick proporcional (fig.1)	2.575,00
0700100209	Cardán	Incluido

* Transmisión por correa



EXTRACTEUR BRF

ÉQUIPEMENT DE SÉRIE

- Système hydraulique avec pompes en aluminium GR.2 40 + 13 lt (HP19)	- Rotation du rotor réversible	- Dispositif anti-choc dans l'attelage à 3 points
- Distributeur avec câbles et télécommande	- Flottant dans la tête	- Cardan
	- Attelage 3 points catégorie 1	






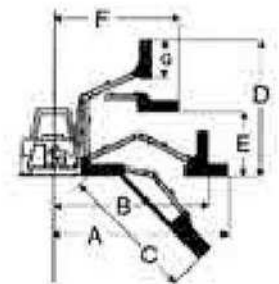
CODE	MODÈLE		 cm	 L	 Hp	 kg	€	
6BRF16	BRF 160	28	50 *	30	15 - 25	600	230	7.485,00
6BRF25	BRF 250	28	60	48	20 - 30	700	260	7.485,00
6BRF30	BRF 300	40	80	55	20 - 30	800	300	7.890,00
6BRF35	BRF 350	40	80	55	25 - 35	900	350	8.380,00



FIG. 1

BRF 160 BRF 250 BRF 300 BRF 350

A	170	250	300	350
B	190	240	290	340
C	110	200	250	300
D	230	280	300	350
E	110	160	180	200
F	135	170	190	210
G	50*	60	80	80



CODE	ACCESSOIRES	€
34803	Tendeurs pour l'attelage au tracteur	215,00
34811	Échangeur de chaleur	850,00
"+E"	Commandes électrohydrauliques du tracteur avec joystick proportionnel (fig.1)	2.575,00
0700100209	Cardan	Incluido

* Transmisión por correa



EXTRACTOR BRF

SERIES EQUIPMENT

- | | | |
|------------------------------------------------------------------|--------------------------------------------------------------------------------------------|---------------------------------------------------------|
| - Hydraulic system with aluminum pumps
GR.2 40 + 13 lt (HP19) | - Reversible rotor rotation
- Floating device in the head
- 3-point hitch category 1 | - Anti-shock device in the 3-point
hitch
- Cardan |
|------------------------------------------------------------------|--------------------------------------------------------------------------------------------|---------------------------------------------------------|






CODE	MODEL		 cm	 oil L	 Hp	 kg	€	
6BRF16	BRF 160	28	50 *	30	15 - 25	600	230	7.485,00
6BRF25	BRF 250	28	60	48	20 - 30	700	260	7.485,00
6BRF30	BRF 300	40	80	55	20 - 30	800	300	7.890,00
6BRF35	BRF 350	40	80	55	25 - 35	900	350	8.380,00



FIG. 1

BRF 160 BRF 250 BRF 300 BRF 350

	BRF 160	BRF 250	BRF 300	BRF 350
A	170	250	300	350
B	190	240	290	340
C	110	200	250	300
D	230	280	300	350
E	110	160	180	200
F	135	170	190	210
G	50*	60	80	80



CODE ACCESSORIES

CODE	ACCESSORIES	€
34803	Tensioners for coupling to the tractor	215,00
34811	Heat exchanger	850,00
"+E"	Electrohydraulic controls for the tractor with proportional joystick (fig.1)	2.575,00
0700100209	Cardan	Incluido

* Transmisión por correa